

Burnside Rd W between Interurban Rd and Tillicum Mall

March 11, 2019 To March 15, 2019



The data presented here is for information purposes only and should not be considered authoritative for construction, geotechnical, engineering, navigational, legal, or other site-specific uses. The information shared is owned by the Transportation Division of the Engineering Department at the District of Saanich. Accuracy is not guaranteed.

Start Date: 11-Mar-19
 Start Time: 0:00
 Station ID: M0005-07

Location 1: Burnside Rd W between Interurban Rd and Tillicum Mall

Note: Interurban Rd and Tillicum Mall

DATE:	March 11, 2019		March 12, 2019		March 13, 2019		March 14, 2019		March 15, 2019		WK AVG		WK AVG	HOURLY
	MON		TUE		WED		THURS		FRI		EB	WB	CH 1+2	%
Time:	EB	WB	EB	WB	EB	WB	EB	WB	EB	WB	EB	WB		
12-1 AM			51	49	41	59	56	62			49	57	106	0.4%
1-2 AM			26	22	15	26	36	7			26	18	44	0.2%
2-3 AM			17	17	16	17	20	20			18	18	36	0.1%
3-4 AM			27	13	22	11	22	15			24	13	37	0.1%
4-5 AM			67	15	69	17	67	26			68	19	87	0.3%
5-6 AM			213	51	248	46	243	41			235	46	281	1.0%
6-7 AM			956	208	1002	187	1051	192			1003	196	1199	4.4%
7-8 AM			1417	531	1443	539	1380	545			1413	538	1952	7.2%
8-9 AM			1408	710	1352	742	1388	751			1383	734	2117	7.8%
9-10 AM			1056	414	992	444	1013	505			1020	454	1475	5.4%
10-11 AM			884	493	775	511	898	555			852	520	1372	5.1%
11-12 PM			905	623	854	594	849	537			869	585	1454	5.4%
12-1 PM			859	675	904	685	882	670			882	677	1558	5.8%
1-2 PM			865	704	847	663	809	683			840	683	1524	5.6%
2-3 PM			820	892	854	900	898	864			857	885	1743	6.4%
3-4 PM			961	1250	928	1203	983	1156			957	1203	2160	8.0%
4-5 PM			1010	1470	1017	1549	918	1507			982	1509	2490	9.2%
5-6 PM			880	1428	931	1286	928	1295			913	1336	2249	8.3%
6-7 PM			853	835	825	821	872	799			850	818	1668	6.2%
7-8 PM			595	572	648	571	638	573			627	572	1199	4.4%
8-9 PM			509	457	488	527	480	504			492	496	988	3.6%
9-10 PM			297	472	333	402	336	465			322	446	768	2.8%
10-11 PM			167	169	160	196	199	191			175	185	361	1.3%
11-12 AM			85	123	79	117	107	132			90	124	214	0.8%
LANES			14928	12193	14843	12113	15073	12095			14948	12134	27082	100.0%
TOTAL			27121		26956		27168				27090			
	MON		TUE		WED		THURS		FRI		WK AVG			

PEAK HOUR					TOTAL VEHICALS-PEAK PERIODS		2 HOUR PEAK INTERVALS						
MAX. 7 - 9 am PEAK HOUR	2117	⇒	7.8%	between 8-9 AM	11821	⇒	6 HR TOTAL	2 HR AM (7 - 9 AM)					
MAX. 7 - 11 am PEAK HOUR	2117	⇒	7.8%	between 8-9 AM	8808	⇒	4 HR TOTAL	VEH / HR	VEH / 2HR	2 HR %			
MAX. 11 am - 1 pm PEAK HOUR	1558	⇒	5.8%	between 12-1 PM				7-8 AM	1952	4069	15.0%		
MAX. 11 am - 3 pm PEAK HOUR	1743	⇒	6.4%	between 2-3 PM				8-9 AM	2117				
MAX. 4 - 6 pm PEAK HOUR	2490	⇒	9.2%	between 4-5 PM				2 HR NOON (11 - 1 PM)					
MAX. 3 - 6 pm PEAK HOUR	2490	⇒	9.2%	between 4-5 PM				VEH / HR	VEH / 2HR	2 HR %			
							24 HOUR FACTORS	11-12 PM	1454	3012	11.1%		
							2.29 ⇒ 6-24 HR FACT.	12-1 PM	1558				
							3.07 ⇒ 4-24 HR FACT.	2 HR PM (4 - 6 PM)					
								VEH / HR	VEH / 2HR	2 HR %			
								4-5 PM	2490	4740	17.5%		
								5-6 PM	2249				

Burnside Rd W between Interurban Rd and Tillicum Mall

Westbound

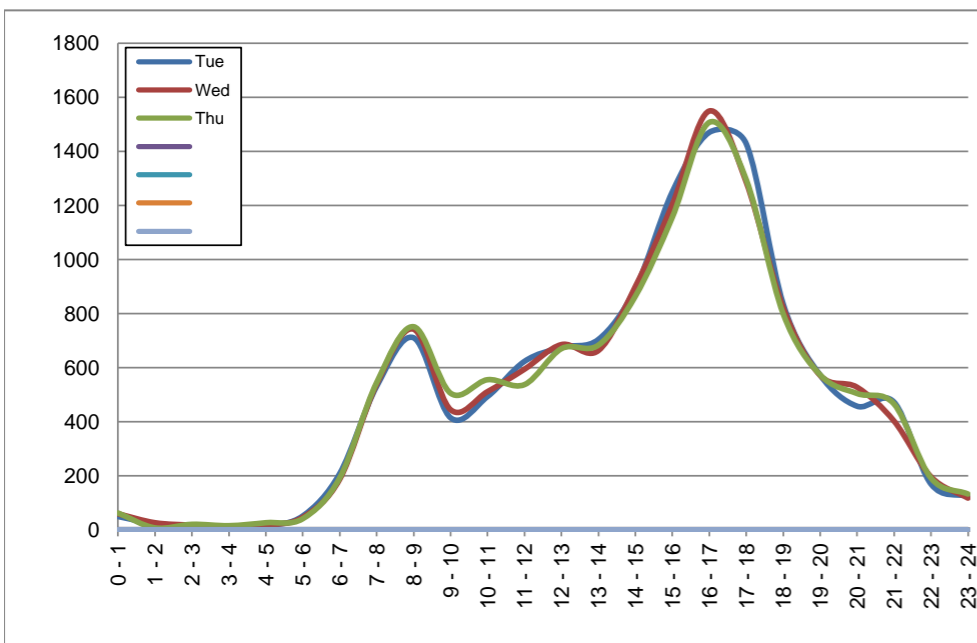
March 12, 2019 to March 14, 2019

Hourly Volumes

Time Period	Tue	Wed	Thu				
	Mar 12	Mar 13	Mar 14				
0 - 1	49	59	62				
1 - 2	22	26	7				
2 - 3	17	17	20				
3 - 4	13	11	15				
4 - 5	15	17	26				
5 - 6	51	46	41				
6 - 7	208	187	192				
7 - 8	531	539	545				
8 - 9	710	742	751				
9 - 10	414	444	505				
10 - 11	493	511	555				
11 - 12	623	594	537				
12 - 13	675	685	670				
13 - 14	704	663	683				
14 - 15	892	900	864				
15 - 16	1250	1203	1156				
16 - 17	1470	1549	1507				
17 - 18	1428	1286	1295				
18 - 19	835	821	799				
19 - 20	572	571	573				
20 - 21	457	527	504				
21 - 22	472	402	465				
22 - 23	169	196	191				
23 - 24	123	117	132				
Day Total	12193	12113	12095				

15-Minute Volumes

Time Start	Tue	Wed	Thu				
	Mar 12	Mar 13	Mar 14				
0:00	12	12	22				
0:15	14	19	19				
0:30	10	12	8				
0:45	13	16	13				
1:00	4	8	1				
1:15	9	6	3				
1:30	4	9	2				
1:45	5	3	1				
2:00	2	4	7				
2:15	5	2	3				
2:30	8	6	8				
2:45	2	5	2				
3:00	3	5	5				
3:15	2	2	2				
3:30	3	1	4				
3:45	5	3	4				
4:00	1	2	4				
4:15	2	3	7				
4:30	4	5	12				
4:45	8	7	3				
5:00	11	10	10				
5:15	8	6	4				
5:30	18	14	13				
5:45	14	16	14				
6:00	29	18	29				
6:15	41	40	43				
6:30	66	65	58				
6:45	72	64	62				
7:00	102	100	87				
7:15	94	125	120				
7:30	162	141	156				
7:45	173	173	182				
8:00	178	207	215				
8:15	212	217	213				
8:30	184	190	188				
8:45	136	128	135				
9:00	114	117	156				
9:15	93	109	118				
9:30	97	111	116				
9:45	110	107	115				
10:00	117	139	122				
10:15	128	114	129				
10:30	123	103	152				
10:45	125	155	152				
11:00	143	143	112				
11:15	147	149	119				
11:30	158	150	149				
11:45	175	152	157				
12:00	163	171	179				
12:15	171	162	169				
12:30	186	172	167				
12:45	155	180	155				
13:00	158	153	144				
13:15	197	169	178				
13:30	173	176	169				
13:45	176	165	192				
14:00	202	214	188				
14:15	217	233	220				
14:30	225	221	224				
14:45	248	232	232				
15:00	285	243	230				
15:15	274	277	259				
15:30	349	318	346				
15:45	342	365	321				
16:00	392	363	396				
16:15	385	382	392				
16:30	343	402	350				
16:45	350	402	369				
17:00	423	383	380				
17:15	398	341	351				
17:30	337	321	310				
17:45	270	241	254				
18:00	234	265	248				
18:15	214	212	204				
18:30	178	183	188				
18:45	209	161	159				
19:00	166	172	165				
19:15	138	122	162				
19:30	147	143	124				
19:45	121	134	122				
20:00	112	132	158				
20:15	119	124	129				
20:30	113	142	107				
20:45	113	129	110				
21:00	138	109	128				
21:15	115	119	160				
21:30	97	79	96				
21:45	122	95	81				
22:00	61	80	68				
22:15	43	44	39				
22:30	30	36	46				
22:45	35	36	38				
23:00	36	37	47				
23:15	34	36	32				
23:30	24	24	27				
23:45	29	20	26				



Site notes:

Burnside Rd W between Interurban Rd and Tillicum Mall

Eastbound

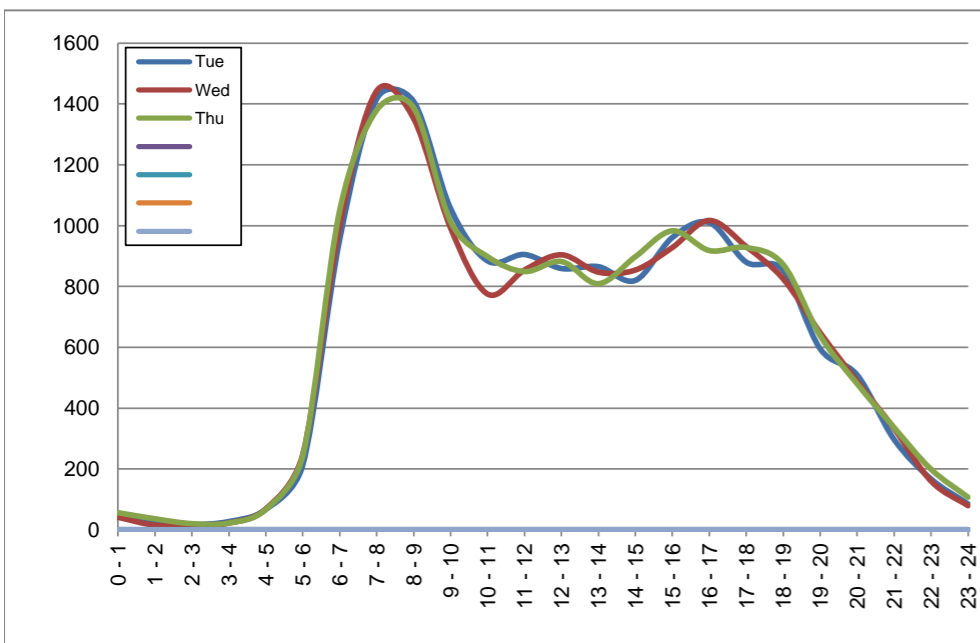
March 12, 2019 to March 14, 2019

Hourly Volumes

Time Period	Tue	Wed	Thu			
	Mar 12	Mar 13	Mar 14			
0 - 1	51	41	56			
1 - 2	26	15	36			
2 - 3	17	16	20			
3 - 4	27	22	22			
4 - 5	67	69	67			
5 - 6	213	248	243			
6 - 7	956	1002	1051			
7 - 8	1417	1443	1380			
8 - 9	1408	1352	1388			
9 - 10	1056	992	1013			
10 - 11	884	775	898			
11 - 12	905	854	849			
12 - 13	859	904	882			
13 - 14	865	847	809			
14 - 15	820	854	898			
15 - 16	961	928	983			
16 - 17	1010	1017	918			
17 - 18	880	931	928			
18 - 19	853	825	872			
19 - 20	595	648	638			
20 - 21	509	488	480			
21 - 22	297	333	336			
22 - 23	167	160	199			
23 - 24	85	79	107			
Day Total	14928	14843	15073			

15-Minute Volumes

Time Start	Tue	Wed	Thu				Time Start	Tue	Wed	Thu			
	Mar 12	Mar 13	Mar 14					Mar 12	Mar 13	Mar 14			
0:00	19	16	23				12:00	210	221	223			
0:15	14	8	13				12:15	198	212	185			
0:30	11	10	13				12:30	202	249	212			
0:45	7	7	7				12:45	249	222	262			
1:00	10	2	12				13:00	210	203	230			
1:15	7	3	9				13:15	212	201	188			
1:30	3	6	8				13:30	223	220	192			
1:45	6	4	7				13:45	220	223	199			
2:00	4	5	4				14:00	195	210	220			
2:15	2	5	5				14:15	191	217	192			
2:30	4	2	8				14:30	215	200	252			
2:45	7	4	3				14:45	219	227	234			
3:00	5	4	6				15:00	248	244	245			
3:15	8	2	4				15:15	263	252	262			
3:30	6	7	7				15:30	208	205	228			
3:45	8	9	5				15:45	242	227	248			
4:00	5	12	11				16:00	218	242	241			
4:15	10	9	9				16:15	272	255	222			
4:30	24	20	19				16:30	239	232	219			
4:45	28	28	28				16:45	281	288	236			
5:00	21	30	26				17:00	235	242	234			
5:15	41	50	50				17:15	238	236	215			
5:30	59	64	78				17:30	220	225	247			
5:45	92	104	89				17:45	187	228	232			
6:00	153	147	160				18:00	220	215	206			
6:15	207	232	226				18:15	200	220	232			
6:30	254	252	310				18:30	213	188	228			
6:45	342	371	355				18:45	220	202	206			
7:00	384	332	342				19:00	178	174	156			
7:15	353	403	336				19:15	149	167	172			
7:30	344	334	347				19:30	142	134	134			
7:45	336	374	355				19:45	126	173	176			
8:00	337	311	342				20:00	129	146	123			
8:15	317	320	333				20:15	103	127	132			
8:30	377	343	367				20:30	143	110	120			
8:45	377	378	346				20:45	134	105	105			
9:00	278	262	282				21:00	89	118	113			
9:15	268	249	248				21:15	70	75	91			
9:30	258	267	240				21:30	77	66	73			
9:45	252	214	243				21:45	61	74	59			
10:00	199	196	201				22:00	52	45	52			
10:15	223	200	238				22:15	43	54	44			
10:30	230	191	226				22:30	39	30	71			
10:45	232	188	233				22:45	33	31	32			
11:00	235	203	180				23:00	24	26	33			
11:15	197	198	207				23:15	30	24	33			
11:30	252	193	249				23:30	15	13	20			
11:45	221	260	213				23:45	16	16	21			



Site notes:

Vehicle Speed Summary

Saanich Engineering Department

Count Id: [M0005-07](#)

Filename: [Burnside Rd W between Interurban Rd and Tillicum Mall-Mar-2019.xlsm](#)

Location: Burnside Rd W between Interurban Rd and Tillicum Mall

Note: Interurban Rd and Tillicum Mall

Direction: **East-West**

Dates: **March 11, 2019 To March 15, 2019**

Filtered data

AVG. SPEED	28 mph	44 km/h
50 % SPEED	29 mph	46 km/h
85 % SPEED	34 mph	54 km/h
95 % SPEED	37 mph	60 km/h

Location Map



Burnside Rd W between Interurban Rd and Tillicum Mall

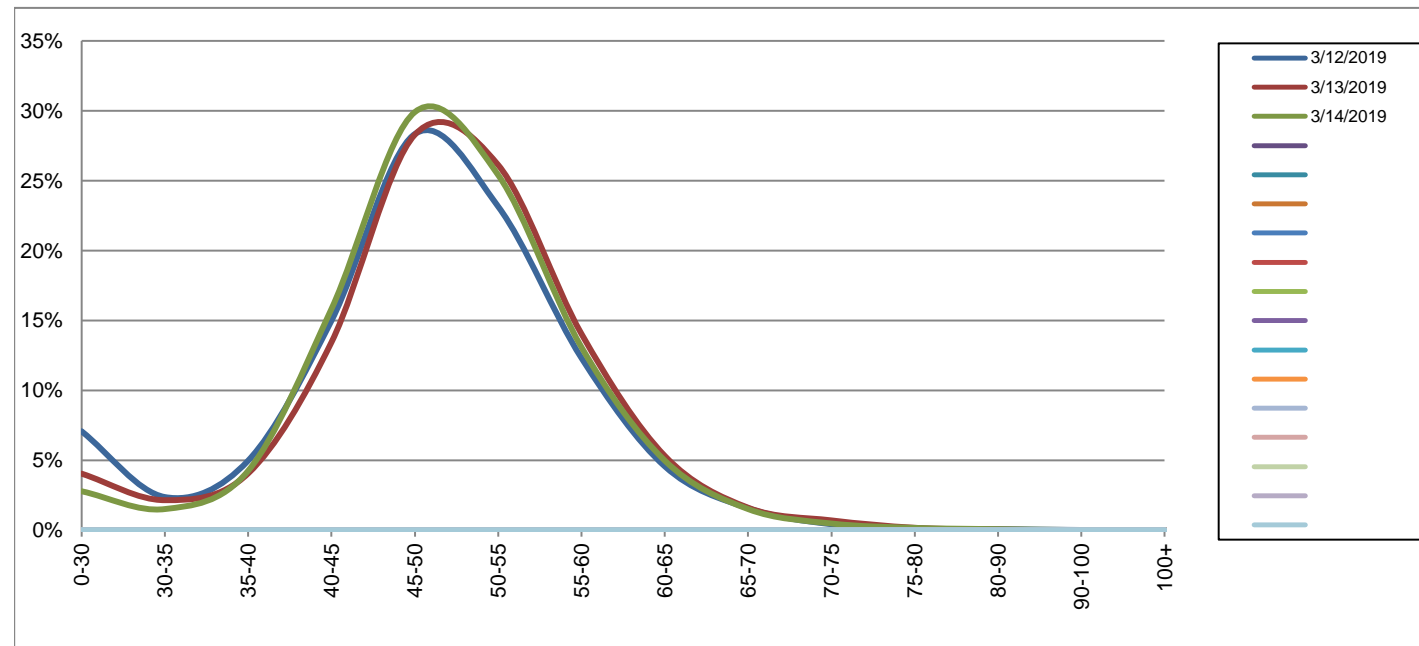
Westbound

March 12, 2019 to March 14, 2019

Daily Speed Bin Percentages															Daily Speed Bin Volumes														Total	Avg.
Bin #	1	2	3	4	5	6	7	8	9	10	11	12	13	14	1	2	3	4	5	6	7	8	9	10	11	12	13	14	Volume	Speed
Bin Speeds	0-30	30-35	35-40	40-45	45-50	50-55	55-60	60-65	65-70	70-75	75-80	80-90	90-100	100+	0-30	30-35	35-40	40-45	45-50	50-55	55-60	60-65	65-70	70-75	75-80	80-90	90-100	100+		
3/12/2019	7.1%	2.4%	5.0%	15.0%	28.3%	23.2%	12.3%	4.6%	1.6%	0.4%	0.1%	0.1%	0.0%	0.0%	863	289	607	1828	3455	2823	1502	557	192	52	14	9	2	0	12193	47
3/13/2019	4.0%	2.1%	4.1%	13.4%	28.3%	26.1%	14.0%	5.3%	1.6%	0.7%	0.2%	0.0%	0.0%	0.0%	490	260	492	1629	3426	3165	1701	644	195	85	21	5	0	0	12113	49
3/14/2019	2.8%	1.5%	4.2%	15.8%	29.9%	25.4%	13.1%	5.0%	1.5%	0.5%	0.2%	0.1%	0.0%	0.0%	337	183	514	1915	3617	3073	1583	602	183	58	20	9	1	0	12095	49
Total	4.6%	2.0%	4.4%	14.8%	28.8%	24.9%	13.1%	5.0%	1.6%	0.5%	0.2%	0.1%	0.0%	0.0%	1690	732	1613	5372	10498	9061	4786	1803	570	195	55	23	3	0	36401	48

Speed Data Summary

Bin #	1	2	3	4	5	6	7	8	9	10	11	12	13	14	Total
Bin Speeds	0-30	30-35	35-40	40-45	45-50	50-55	55-60	60-65	65-70	70-75	75-80	80-90	90-100	100+	
Survey Total	1690	732	1613	5372	10498	9061	4786	1803	570	195	55	23	3	0	36401
% Total	4.6%	2.0%	4.4%	14.8%	28.8%	24.9%	13.1%	5.0%	1.6%	0.5%	0.2%	0.1%	0.0%	0.0%	100%
Accumulated %	4.6%	6.7%	11.1%	25.8%	54.7%	79.6%	92.7%	97.7%	99.2%	99.8%	99.9%	100.0%	100.0%	100%	
Inverse Accum. %	95.4%	93.3%	88.9%	74.2%	45.3%	20.4%	7.3%	2.3%	0.8%	0.2%	0.1%	0.0%	0.0%	0.0%	
Average Speed	48 KM/H														



Site notes:

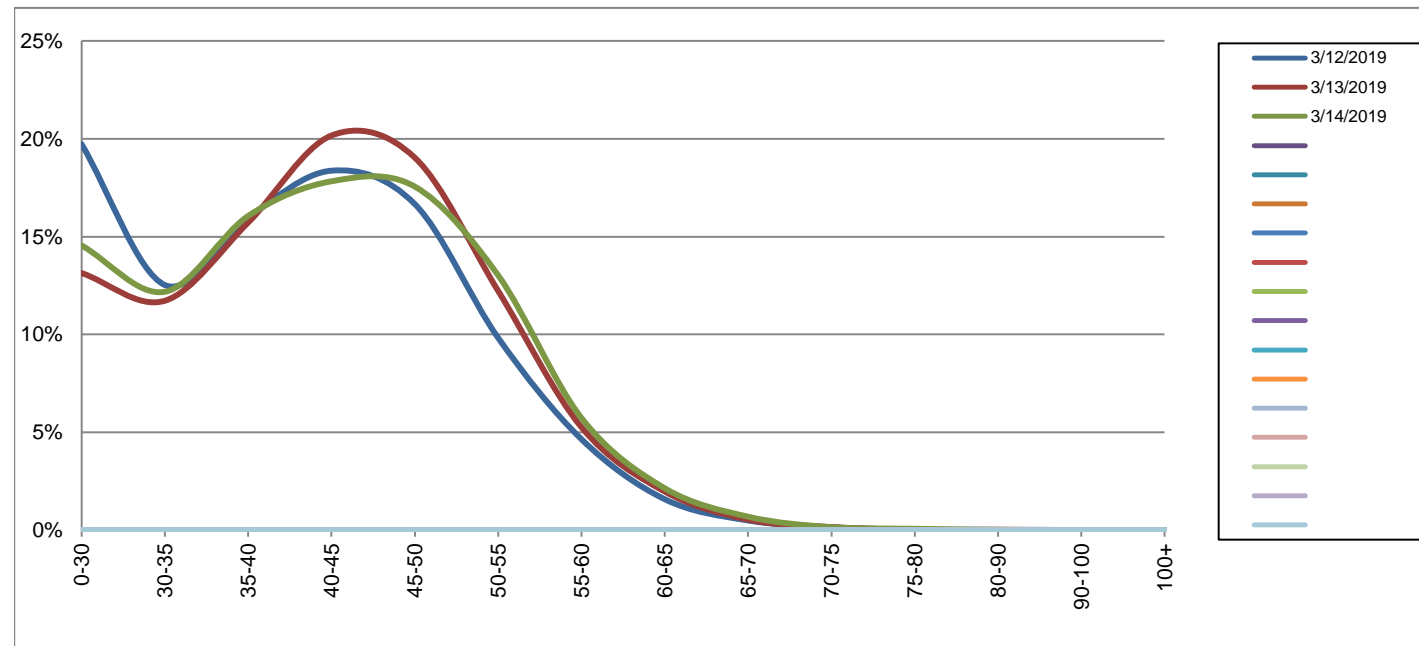
Burnside Rd W between Interurban Rd and Tillicum Mall

Eastbound
March 12, 2019 to March 14, 2019

Daily Speed Bin Percentages															Daily Speed Bin Volumes														Total	Avg.
Bin #	1	2	3	4	5	6	7	8	9	10	11	12	13	14	1	2	3	4	5	6	7	8	9	10	11	12	13	14	Volume	Speed
Bin Speeds	0-30	30-35	35-40	40-45	45-50	50-55	55-60	60-65	65-70	70-75	75-80	80-90	90-100	100+	0-30	30-35	35-40	40-45	45-50	50-55	55-60	60-65	65-70	70-75	75-80	80-90	90-100	100+		
3/12/2019	19.7%	12.5%	16.0%	18.4%	16.7%	9.8%	4.6%	1.6%	0.5%	0.1%	0.0%	0.0%	0.0%	0.0%	2945	1870	2385	2742	2487	1467	694	236	74	22	4	2	0	0	14928	38
3/13/2019	13.1%	11.7%	15.7%	20.2%	19.0%	12.2%	5.3%	2.0%	0.5%	0.2%	0.0%	0.0%	0.0%	0.0%	1950	1740	2333	2993	2825	1815	781	293	80	24	4	4	1	0	14843	40
3/14/2019	14.5%	12.2%	16.1%	17.8%	17.6%	13.0%	5.7%	2.1%	0.7%	0.2%	0.1%	0.0%	0.0%	0.0%	2193	1836	2420	2687	2646	1963	864	323	104	23	11	3	0	0	15073	40
Total	15.8%	12.1%	15.9%	18.8%	17.7%	11.7%	5.2%	1.9%	0.6%	0.2%	0.0%	0.0%	0.0%	0.0%	7088	5446	7138	8422	7958	5245	2339	852	258	69	19	9	1	0	44844	40

Speed Data Summary

Bin #	1	2	3	4	5	6	7	8	9	10	11	12	13	14	Total
Bin Speeds	0-30	30-35	35-40	40-45	45-50	50-55	55-60	60-65	65-70	70-75	75-80	80-90	90-100	100+	
Survey Total	7088	5446	7138	8422	7958	5245	2339	852	258	69	19	9	1	0	44844
% Total	15.8%	12.1%	15.9%	18.8%	17.7%	11.7%	5.2%	1.9%	0.6%	0.2%	0.0%	0.0%	0.0%	0.0%	100%
Accumulated %	15.8%	28.0%	43.9%	62.6%	80.4%	92.1%	97.3%	99.2%	99.8%	99.9%	100.0%	100.0%	100.0%	100%	
Inverse Accum. %	84.2%	72.0%	56.1%	37.4%	19.6%	7.9%	2.7%	0.8%	0.2%	0.1%	0.0%	0.0%	0.0%	0.0%	
Average Speed	40 KM/H														



Site notes:

Burnside Rd W between Interurban Rd and Tillicum Mall

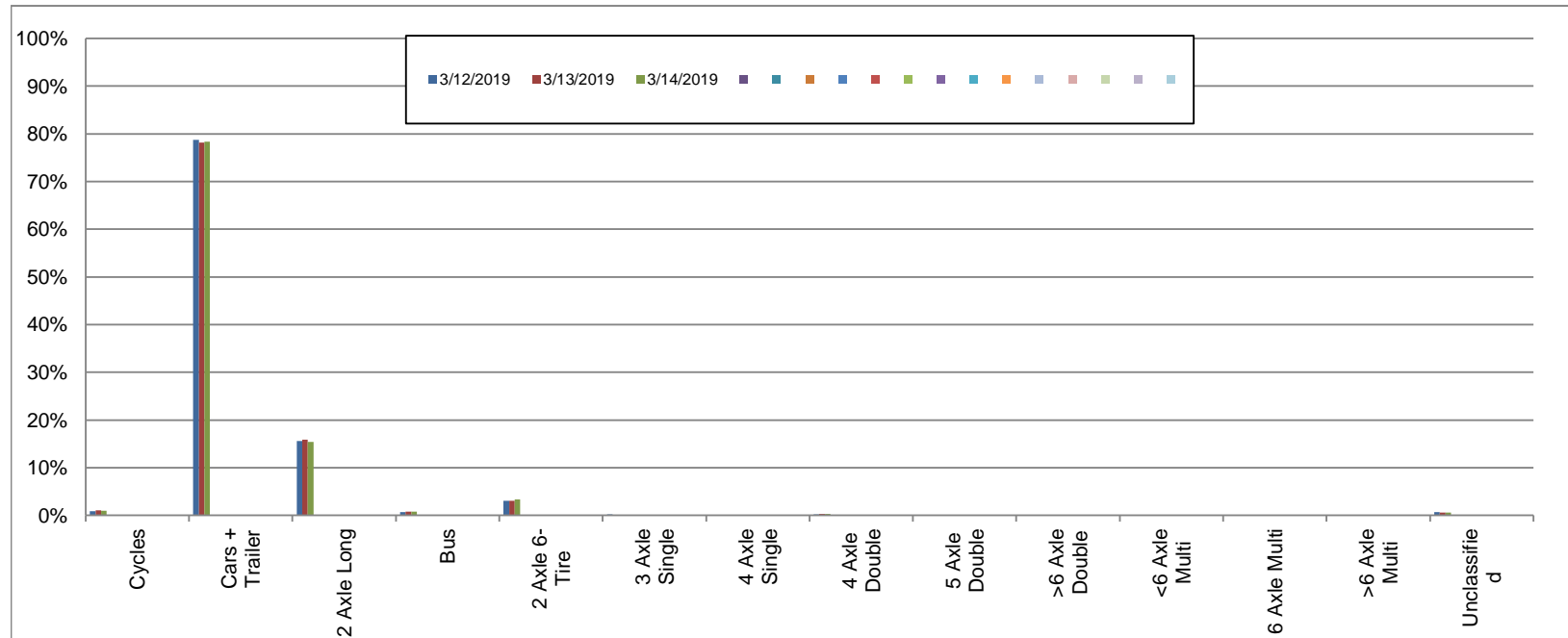
Westbound

March 12, 2019 to March 14, 2019

Daily Class Bin Percentages															Daily Class Bin Volumes														
Bin #	1	2	3	4	5	6	7	8	9	10	11	12	13	14	1	2	3	4	5	6	7	8	9	10	11	12	13	14	Total Volume
Bin Class	Cycles	Cars + Trailer	2 Axle Long	Bus	2 Axle 6-Tire	3 Axle Single	4 Axle Single	4 Axle Double	5 Axle Double	>6 Axle Double	<6 Axle Multi	6 Axle Multi	>6 Axle Multi	Unclassified	Cycles	Cars + Trailer	2 Axle Long	Bus	2 Axle 6-Tire	3 Axle Single	4 Axle Single	4 Axle Double	5 Axle Double	>6 Axle Double	<6 Axle Multi	6 Axle Multi	>6 Axle Multi	Unclassified	Total Volume
3/12/2019	0.8%	78.7%	15.6%	0.6%	3.0%	0.2%	0.1%	0.2%	0.0%	0.0%	0.0%	0.0%	0.0%	0.7%	102	9595	1903	78	371	20	12	29	0	1	0	0	0	82	12193
3/13/2019	1.1%	78.1%	15.9%	0.7%	3.1%	0.1%	0.1%	0.3%	0.0%	0.0%	0.0%	0.0%	0.0%	0.6%	132	9464	1922	89	372	16	11	34	4	0	0	0	0	69	12113
3/14/2019	1.0%	78.4%	15.4%	0.8%	3.3%	0.1%	0.1%	0.3%	0.0%	0.0%	0.0%	0.0%	0.0%	0.5%	117	9480	1857	96	405	17	13	42	1	1	0	0	0	66	12095
Total	1.0%	78.4%	15.6%	0.7%	3.2%	0.1%	0.1%	0.3%	0.0%	0.0%	0.0%	0.0%	0.0%	0.6%	351	28539	5682	263	1148	53	36	105	5	2	0	0	0	217	36401

Class Data Summary

Bin #	1	2	3	4	5	6	7	8	9	10	11	12	13	14	Total Volume
Bin Class	Cycles	Cars + Trailer	2 Axle Long	Bus	2 Axle 6-Tire	3 Axle Single	4 Axle Single	4 Axle Double	5 Axle Double	>6 Axle Double	<6 Axle Multi	6 Axle Multi	>6 Axle Multi	Unclassified	Total Volume
Survey Total	351	28539	5682	263	1148	53	36	105	5	2	0	0	0	217	36401
% Total	1.0%	78.4%	15.6%	0.7%	3.2%	0.1%	0.1%	0.3%	0.0%	0.0%	0.0%	0.0%	0.0%	0.6%	100%
Accumulated %	1.0%	79.4%	95.0%	95.7%	98.9%	99.0%	99.1%	99.4%	99.4%	99.4%	99.4%	99.4%	99.4%	100.0%	
Inv. Accum. %	99.0%	20.6%	5.0%	4.3%	1.1%	1.0%	0.9%	0.6%	0.6%	0.6%	0.6%	0.6%	0.6%	0.0%	



Classification Descriptions

Bin #	Bin Description
1	Motorcycles
2	Passenger cars, including those with recreational trailers
3	2-axle pick-ups, vans, and RVs, including those with recreational trailers
4	Buses
5	2-axle, 6-tire single units
6	3-axle single units
7	4-axle single units
8	3-axle or 4-axle double unit
9	5-axle double unit
10	6-, 7-, or 8-axle double unit
11	5-axle multiple unit
12	6-axle multiple unit
13	7-or-more-axle multiple unit
14	Vehicles that could not be classified

Site notes:

Burnside Rd W between Interurban Rd and Tillicum Mall

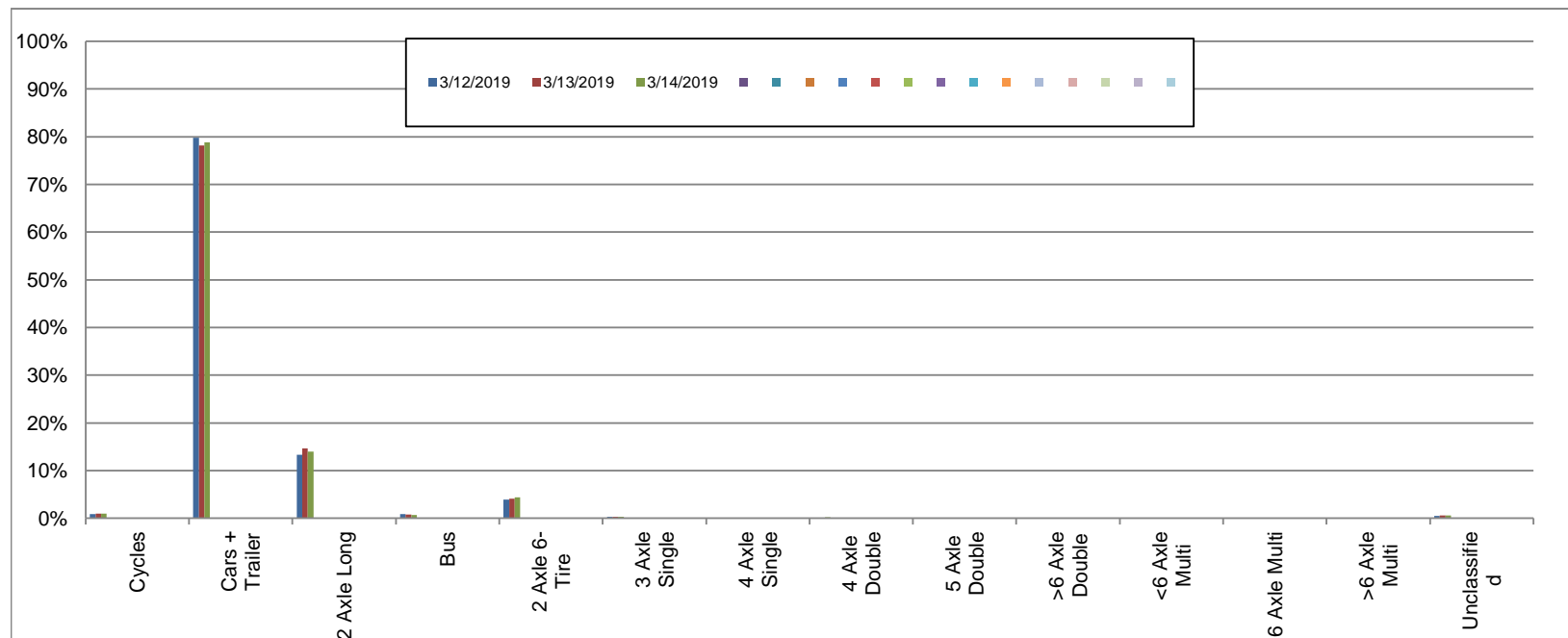
Eastbound

March 12, 2019 to March 14, 2019

Daily Class Bin Percentages															Daily Class Bin Volumes										Total Volume				
Bin #	1	2	3	4	5	6	7	8	9	10	11	12	13	14	1	2	3	4	5	6	7	8	9	10		11	12	13	14
Bin Class	Cycles	Cars + Trailer	2 Axle Long	Bus	2 Axle 6-Tire	3 Axle Single	4 Axle Single	4 Axle Double	5 Axle Double	>6 Axle Double	<6 Axle Multi	6 Axle Multi	>6 Axle Multi	Unclassified	Cycles	Cars + Trailer	2 Axle Long	Bus	2 Axle 6-Tire	3 Axle Single	4 Axle Single	4 Axle Double	5 Axle Double	>6 Axle Double	<6 Axle Multi	6 Axle Multi	>6 Axle Multi	Unclassified	
3/12/2019	0.9%	79.8%	13.3%	0.9%	3.9%	0.3%	0.1%	0.1%	0.0%	0.1%	0.0%	0.0%	0.1%	0.5%	129	11913	1991	131	577	51	11	20	5	12	0	0	8	80	14928
3/13/2019	1.0%	78.2%	14.6%	0.8%	4.1%	0.3%	0.0%	0.2%	0.1%	0.1%	0.0%	0.0%	0.1%	0.6%	150	11605	2173	117	615	41	5	23	12	8	0	0	10	84	14843
3/14/2019	0.9%	78.8%	14.0%	0.7%	4.3%	0.3%	0.0%	0.2%	0.1%	0.1%	0.0%	0.0%	0.1%	0.6%	139	11879	2107	98	654	41	6	26	9	10	0	0	9	95	15073
Total	0.9%	78.9%	14.0%	0.8%	4.1%	0.3%	0.0%	0.2%	0.1%	0.1%	0.0%	0.0%	0.1%	0.6%	418	35397	6271	346	1846	133	22	69	26	30	0	0	27	259	44844

Class Data Summary

Bin #	1	2	3	4	5	6	7	8	9	10	11	12	13	14	Total Volume
Bin Class	Cycles	Cars + Trailer	2 Axle Long	Bus	2 Axle 6-Tire	3 Axle Single	4 Axle Single	4 Axle Double	5 Axle Double	>6 Axle Double	<6 Axle Multi	6 Axle Multi	>6 Axle Multi	Unclassified	Total Volume
Survey Total	418	35397	6271	346	1846	133	22	69	26	30	0	0	27	259	44844
% Total	0.9%	78.9%	14.0%	0.8%	4.1%	0.3%	0.0%	0.2%	0.1%	0.1%	0.0%	0.0%	0.1%	0.6%	100%
Accumulated %	0.9%	79.9%	93.8%	94.6%	98.7%	99.0%	99.1%	99.2%	99.3%	99.4%	99.4%	99.4%	99.4%	100.0%	
Inv. Accum. %	99.1%	20.1%	6.2%	5.4%	1.3%	1.0%	0.9%	0.8%	0.7%	0.6%	0.6%	0.6%	0.6%	0.0%	



Classification Descriptions

Bin #	Bin Description
1	Motorcycles
2	Passenger cars, including those with recreational trailers
3	2-axle pick-ups, vans, and RVs, including those with recreational trailers
4	Buses
5	2-axle, 6-tire single units
6	3-axle single units
7	4-axle single units
8	3-axle or 4-axle double unit
9	5-axle double unit
10	6-, 7-, or 8-axle double unit
11	5-axle multiple unit
12	6-axle multiple unit
13	7-or-more-axle multiple unit
14	Vehicles that could not be classified

Site notes: